

Suit Tester Getting Started

© 2012 Factair Limited

1 Welcome to Suit Tester

What is Suit Tester Software?

Suit Tester Software is designed for use with a "Suit Tester" and allows you to make permanent records of the tests carried out on individual suits. Suit Tester also allows you to view and print historical data graphs.

Single and Dual suit versions

Suit Testers are available as either single suit or dual suit versions. The dual suit versions can test two suits at the same time. The Suit Tester software will automatically determine what type of Suit Tester you have attached and configure itself accordingly.

Testing Standards and Measurement units

Each Suit Tester is delivered pre-configured and calibrated to test suits against a certain standard (EN464, ASTM1052 etc) using a predefined set of measurement units (Pa, mbar, mmH₂O or InH₂O). The Suit Tester software automatically interrogates the Suit Tester to determine the test parameters and then configures itself automatically.

Note: Calibration and configuration of each Suit Tester can only be carried out by the manufacturer or approved distributor. Please contact if required.

2 Attaching a Suit Tester

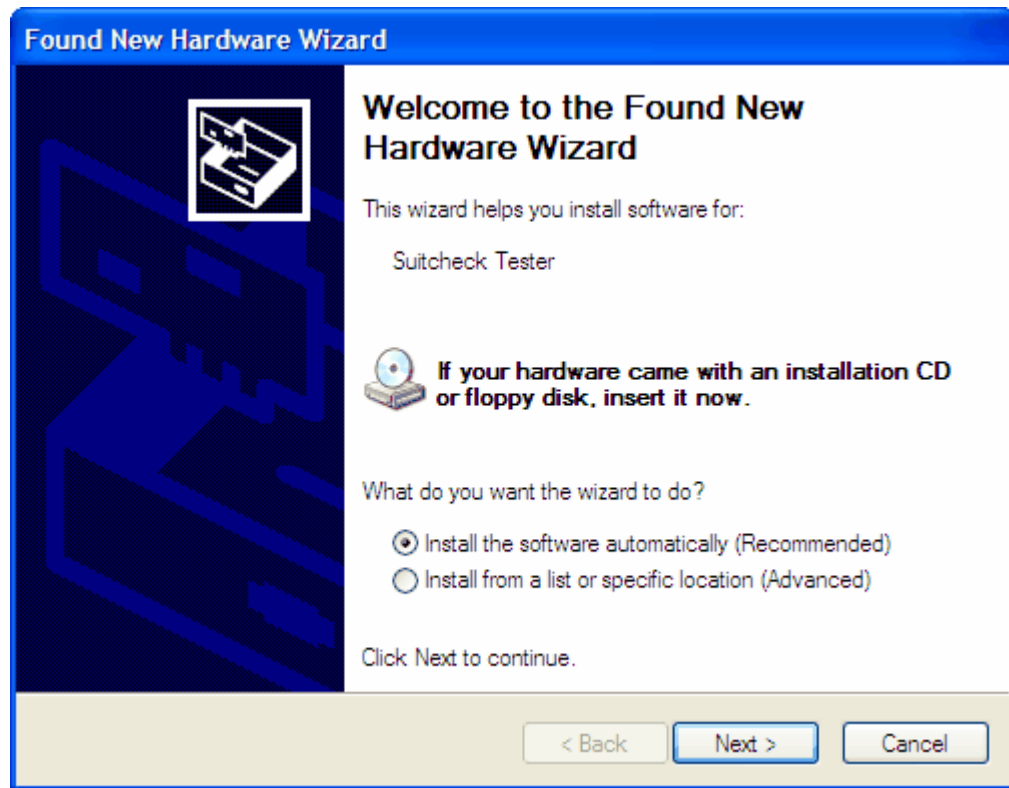
Note: It is best to fully install the supplied software **before** attaching the Suit Tester for the first time.

Note: More recent versions of Windows attempt to look for newer drivers on the internet before installing drivers that are supplied with the product. This can sometimes lead to the installation of the wrong drivers therefore if you have a permanent internet connection, please disable the connection **before** connecting the Suit Tester for the first time. Alternatively if you are asked whether you want to check the internet for an updated driver, select "Not this time".

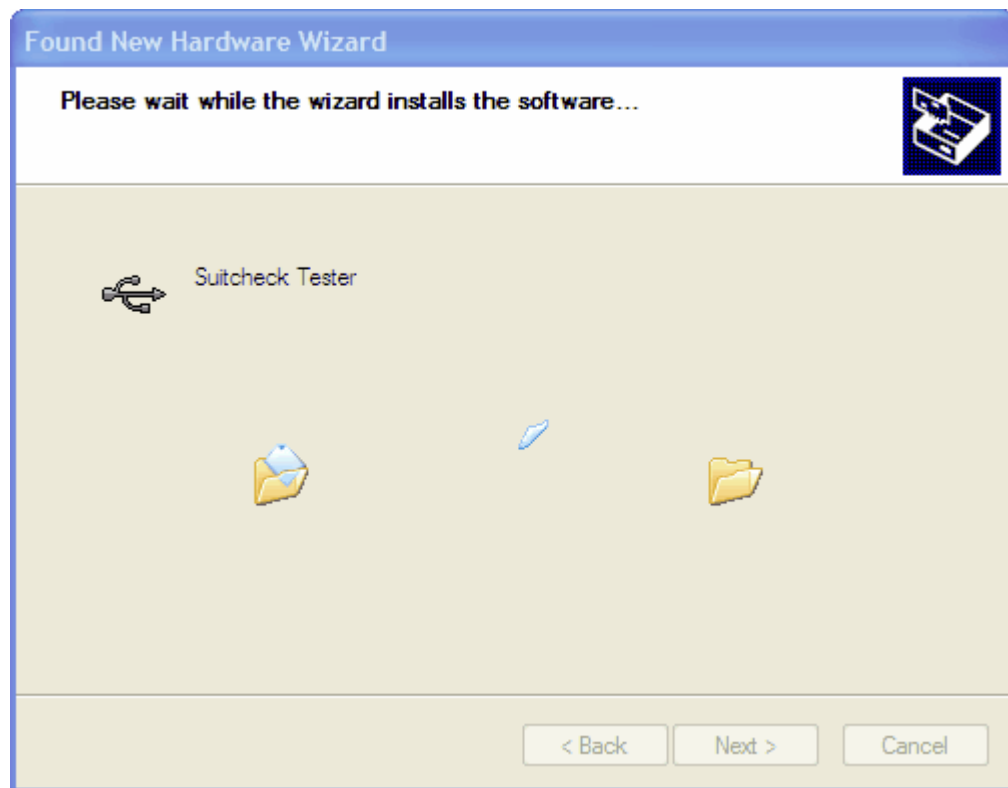
Once you have installed the supplied software, connect your Suit Tester to a spare USB port. The computer should detect the Suit Tester and will show the messages below:



After a few moments, Windows will show the following message:



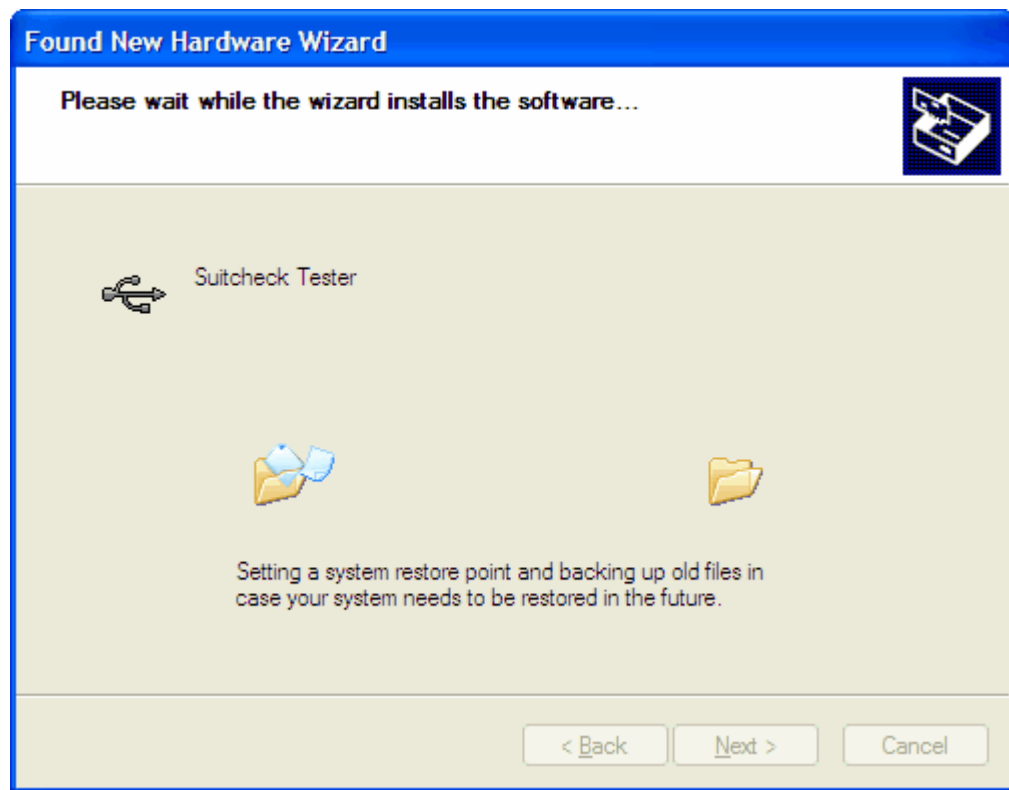
Click Next and the following window will appear while Windows searches for the driver to install



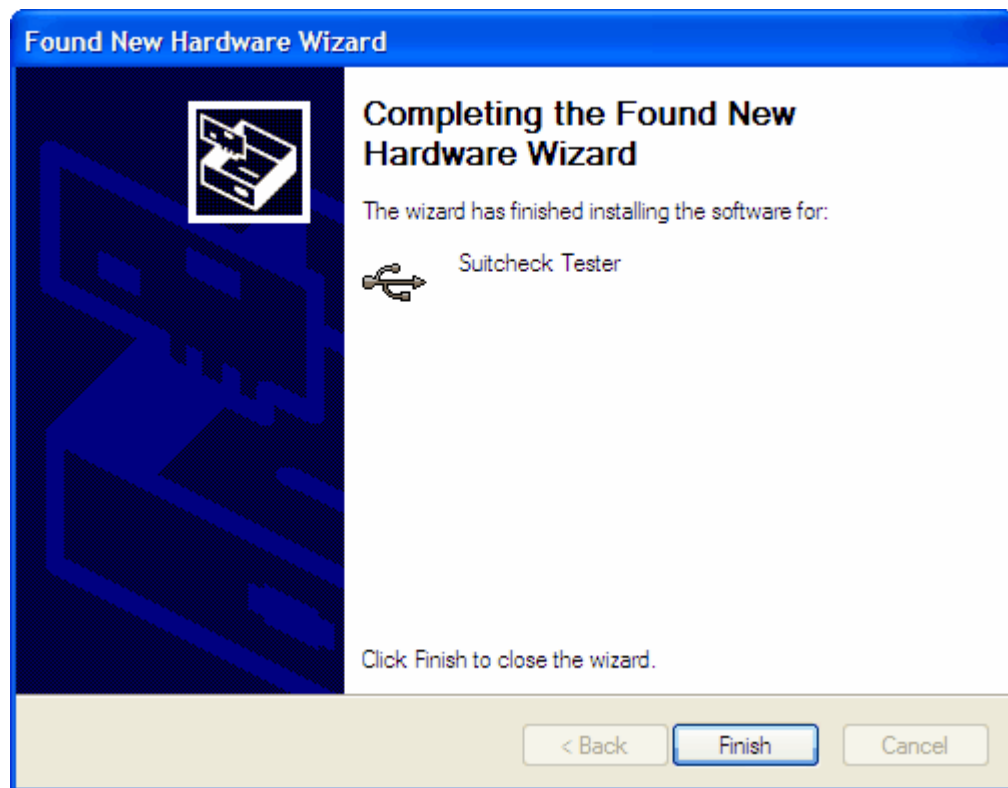
If the box below appears then you must click "Continue Anyway" in order to continue



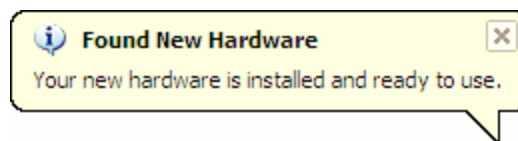
Windows will spend a while creating a System Restore point (unless your system restore is turned off)



Providing everything above was followed, Windows should show the following box to indicate success



Windows may well inform you that the hardware is installed and ready to use



3 Minimum Computer Specification

Suitcheck requires the following:

- Windows® 2000, XP Home, XP Pro or higher
- Microsoft® .NET Framework V2.0 (If this is not installed then you will be prompted to install it during the software installation - Without this you cannot use Suit Tester)
- An installed and configured printer (If you wish to print graphs)
- A spare USB port (If you wish to test a suit using a Suit Tester)
- About 1MB of free disk space (Extra space required to store suit test files)